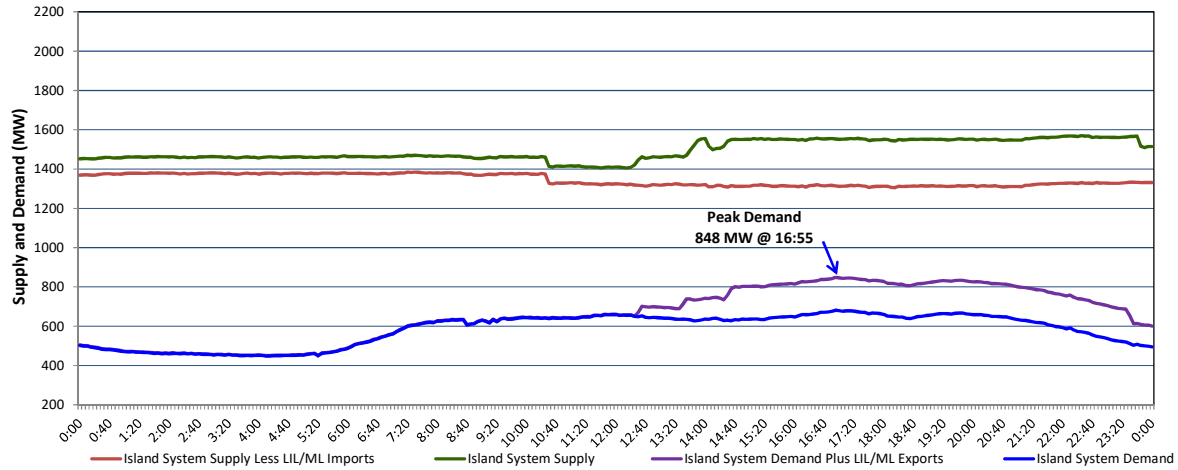


**Newfoundland Labrador Hydro (NLH)
Supply and Demand Status Report Filed Wednesday, September 28, 2022**

**Section 1
Island Interconnected System Supply, Demand & Exports
Actual 24 Hour System Performance For Tuesday, September 27, 2022**



Supply Notes For September 27, 2022

- A As of 0800 hours, July 31, 2022, Holyrood Unit 2 unavailable due to planned outage 150 MW (170 MW).
- B As of 1040 hours, August 27, 2022, Holyrood Unit 3 available but not operating (150 MW).
- C As of 1748 hours, September 11, 2022, Cat Arm Unit 2 unavailable due to planned outage (67 MW).
- D As of 0814 hours, September 12, 2022, Cat Arm Unit 1 unavailable due to planned outage (67 MW).
- E As of 0846 hours, September 26, 2022, Holyrood Unit 1 available but not operating 90 MW (170 MW).
- F As of 1304 hours, September 26, 2022, Hinds Lake Unit available at 65 MW (75 MW).
- G At 1033 hours, September 27, 2022, Stephenville Gas Turbine unavailable (50 MW).

**Section 2
Island Interconnected Supply and Demand**

Wed, Sep 28, 2022	Island System Outlook ³		Seven-Day Forecast	Temperature (°C)		Island System Daily Peak Demand (MW)	
				Morning	Evening	Forecast	Adjusted ⁷
Available Island System Supply: ⁵	1,487	MW	Wednesday, September 28, 2022	18	18	835	835
NLH Island Generation: ^{4,8}	1,010	MW	Thursday, September 29, 2022	15	13	765	765
NLH Island Power Purchases: ⁶	125	MW	Friday, September 30, 2022	12	11	765	765
Other Island Generation:	215	MW	Saturday, October 1, 2022	11	12	730	730
ML/LIL Imports:	137	MW	Sunday, October 2, 2022	9	6	840	840
Current St. John's Temperature & Windchill:	18	N/A	Monday, October 3, 2022	5	5	895	895
7-Day Island Peak Demand Forecast:	895	MW	Tuesday, October 4, 2022	6	8	865	865

Supply Notes For September 28, 2022

- Notes:
- Generation outages for running and corrective maintenance are included. These are not unusual for power system operations. They generally do not impact customer supply. The power system operators schedule outages to system equipment whenever possible to coincide with periods when customer demands are low and sufficient supply reserves are available. However, from time to time equipment outages are necessary and reserves may be impacted.
 - Due to the Island system having no synchronous connections to the larger North American grid, when there is a sudden loss of large generating units there may be a requirement for some customer's load to be interrupted for short periods to bring generation output equal to customer demand. This automatic action of power system protection, referred to as under frequency load shedding (UFLS), is necessary to ensure the integrity and reliability of system equipment. Under frequency events have typically occurred 5 to 8 times per year on the Island Interconnected System and the resultant customer load interruptions are generally less than 30 minutes. With the activation of the Maritime Link frequency controller during the winter of 2018, UFLS events have occurred less frequently.
 - As of 0800 Hours.
 - Gross output including station service at Holyrood (24.5 MW) and improved NLH hydraulic output due to water levels (35 MW).
 - Gross output from all Island sources (including Note 4).
 - NLH Island Power Purchases include: CBPP Co-Gen, Nalcor Exploits, Rattle Brook, Star Lake, Wind Generation and capacity assistance (when applicable).
 - Adjusted for curtailable load, market activities and the impact of voltage reduction when applicable.
 - Due to limitations inherent in the design of combustion turbines, the output of combustion turbines may be reduced in the event that ambient temperatures exceed the threshold required for full rated output. This threshold is dependent on the design of each turbine.

**Section 3
Island Peak Demand Information
Previous Day Actual Peak and Current Day Forecast Peak**

Tue, Sep 27, 2022	Actual Island Peak Demand ⁹	16:55	848 MW
Wed, Sep 28, 2022	Forecast Island Peak Demand		835 MW

Notes: 9. Island Demand / LIL / ML Exports (where applicable) is supplied by NLH generation and purchases, plus generation owned and operated by Newfoundland Power and Corner Brook Pulp & Paper (Deer Lake Power, DLP).